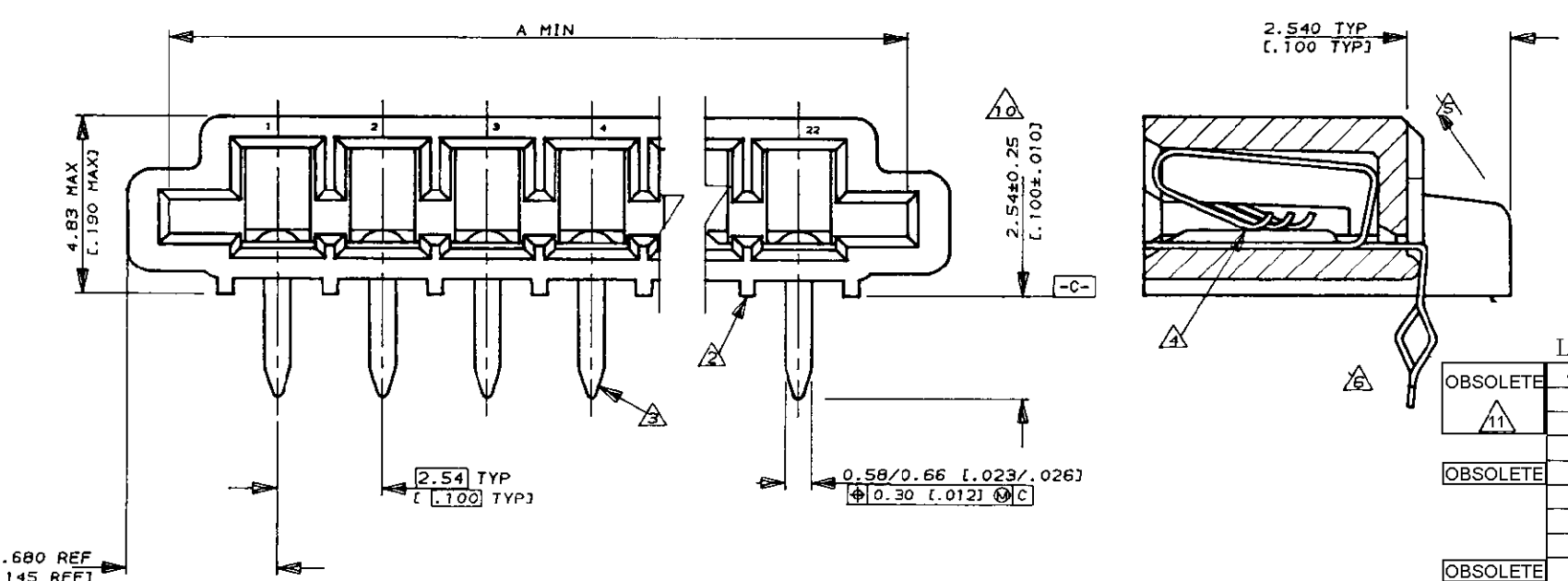
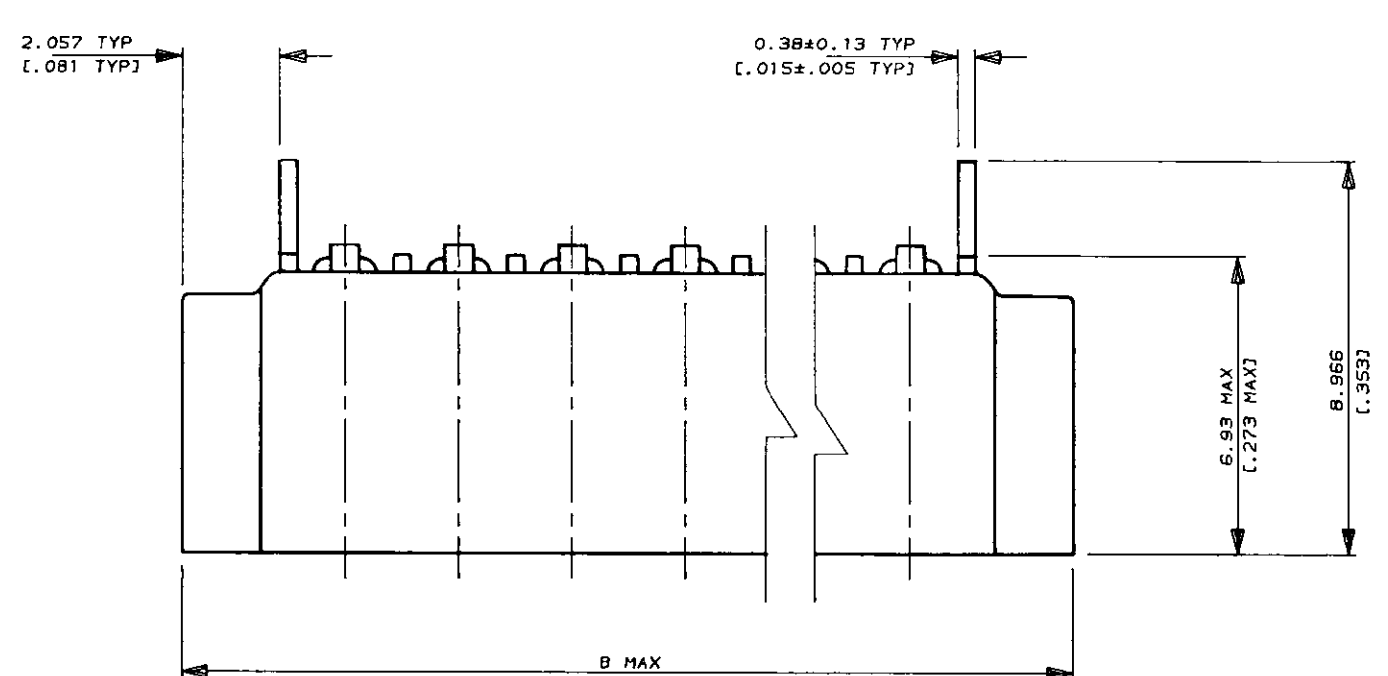


NUMBER 520314  
 METRIC  
 DIMENSIONS IN MM (INCHES). DO NOT SCALE PRINT  
 PRINT DIST



- NOTES**
- CONNECTOR WILL ACCEPT FLEXIBLE PRINTED CIRCUIT OR FLAT FLEXIBLE CABLE ON 2.54 (.100) CENTERS IN A THICKNESS RANGE OF 0.127 TO 0.381 (.005 TO .015) IN CONTACT AREA
  - STAND-OFFS PREVENT SOLVENT ENTRAPMENT
  - LEAD-IN ON PINS FOR EASE OF INSERTION INTO BOARD
  - SEQUENTIAL CONTACTS REDUCE CABLE INSERTION FORCE
  - STABILIZING WING MAY BE REMOVED BY CUSTOMER IF NECESSARY
  - ALTERNATING CONTACT FORM RETAINS CONNECTOR IN P.C. BOARD DURING SOLDER OPERATION
  - ACCEPTS CABLE OR CIRCUITRY WITH EXPOSED CONDUCTORS FACING TOWARD OR AWAY FROM THE BOARD SURFACE
  - REFER TO APPLICATION SPEC 114-2062
  - MATERIAL  
HOUSING : GLASS REINFORCED POLYESTER  
THERMOPLASTIC UL 94 VO RATED, BLACK  
CONTACT : PHOS BRONZE WITH MATTE TIN FINISH.
  - AREA INDICATED SHALL MEET SOLDERABILITY SPEC 109-11-1
  - OBsolete PARTS: OBsolete CIS STREAMLINING PER D.RENAUD/D.SINISI

		LEAD FREE			SUPERSEDED	
OBsolete	Part No	Packing	B	A	POS	Part No
OBsolete	<del>5-520314-2</del>		60.78 [ 2.393 ]	58.62 [ 2.308 ]	22	<del>2-520314-2</del>
OBsolete	<del>5-520314-1</del>		58.24 [ 2.293 ]	56.08 [ 2.208 ]	21	<del>2-520314-1</del>
OBsolete	<del>5-520314-0</del>		55.70 [ 2.193 ]	53.54 [ 2.108 ]	20	<del>2-520314-0</del>
	6-520314-9		53.16 [ 2.093 ]	51.00 [ 2.008 ]	19	1-520314-9
OBsolete	<del>5-520314-8</del>		50.62 [ 1.993 ]	48.46 [ 1.908 ]	18	<del>1-520314-8</del>
	6-520314-7		48.08 [ 1.893 ]	45.92 [ 1.808 ]	17	1-520314-7
	6-520314-6		45.54 [ 1.793 ]	43.38 [ 1.708 ]	16	1-520314-6
	6-520314-5		43.00 [ 1.693 ]	40.84 [ 1.608 ]	15	1-520314-5
OBsolete	<del>5-520314-4</del>		40.46 [ 1.593 ]	38.30 [ 1.508 ]	14	<del>1-520314-4</del>
	6-520314-3		37.92 [ 1.493 ]	35.76 [ 1.408 ]	13	1-520314-3
	6-520314-2		35.38 [ 1.393 ]	33.22 [ 1.308 ]	12	1-520314-2
	6-520314-1		32.84 [ 1.293 ]	30.68 [ 1.208 ]	11	1-520314-1
	6-520314-0		30.30 [ 1.193 ]	28.14 [ 1.108 ]	10	1-520314-0
	5-520314-9		27.76 [ 1.093 ]	25.60 [ 1.008 ]	9	520314-9
	5-520314-8		25.22 [ .993 ]	23.06 [ .908 ]	8	520314-8
	5-520314-7		22.68 [ .893 ]	20.52 [ .808 ]	7	520314-7
	5-520314-6		20.14 [ .793 ]	17.98 [ .708 ]	6	520314-6
	5-520314-5		17.60 [ .693 ]	15.44 [ .608 ]	5	520314-5
	5-520314-4		15.06 [ .593 ]	12.90 [ .508 ]	4	520314-4
OBsolete	<del>5-520314-3</del>		12.52 [ .493 ]	10.36 [ .408 ]	3	<del>520314-3</del>
	5-520314-2		9.98 [ .393 ]	7.82 [ .308 ]	2	520314-2

Copyright ©1993					Copyright ©1993 TE MFG (S) PTE LTD. ALL RIGHTS RESERVED.			<b>STE</b> TE Connectivity		
S3	ECR-10-022530	KK	HMR	07FEB11	(WIRE RANGE)	(INSULATION DIA.)	(NAME)	TRIOMATE HORIZONTAL CABLE ENTRY FOR 1.57 [.062] THK P.C. BOARD (GENERAL TOLERANCE) ±.38 [±.015] SIZE LOC (No.) A3 DY 520314 (SCALE) REV. SHEET 6:1 S3 1 OF 1		
S2	ECO-10-000445	KK	AEG	11JAN10	mm <sup>2</sup> (AWG - )	mmØ				
S1	REVISED AS PER ECR-06-04332	PM	KS	21FEB06	(MATERIAL)	(FINISH) CONTACTS MATTE TIN/LEAD PLATED				
S	REVISED FRO00-0011-04	SD	PCH	19FEB04						
R	REVISED DY/EC/0920	LWY	SL	13.12.93	DR. WYLEE 30.7.93	DE. A.SOH				
Q	REDRAWN DY/EC/0784	LWY	SL	30.7.93	CHK. SALLY 30.7.93	APP. PETER de JONG				
LTR	(REVISION RECORD)	DR	CHK	DATE						

(CUSTOMER DRAWING)